

Rwanda's Social Demographics
Indicators

LMIS Report

2/1/2011

LMIS

Contents

Population:.....	3
Population growth Rate status	5
Population Density.....	6
Life expectancy	9
Dependency Ratio.....	10
Net Migration Rate	11
HIV Status.....	12
Results of the above population	14
Impact of growth rate of the population, on growth rate of GDP per capita	15
Population Distribution between Respective Age groups	16

Population:

This is the total number of people living within predefined boundaries such as a Country, District, Province and a region.

The current population is estimated to be approximately 10,622,222 by NISR, it's estimated to have increased from 9556669 in 2007 to 10,622,222 in 2011 and further linearly estimated to increase to 13,518,555 by 2022.

The female dominate the population with an approximate proportion of 52% with the male taking up 48%.

The Rwanda Population is a young population with the infants and youth accounting for approximately 80% with the Infants accounting for 40% and the Youth 40.2% and elderly 2.6%.

The productive age group accounts for over 52% for the years respectively, for more details see table below.

Population size and growth rates

Year	Total population	Male population	Female population	Male Percent	Female Percent
2007	9556669	4597277	4959393	0.48	0.52
2008	9822186	4731386	5090800	0.48	0.52
2009	10088891	4866000	5222890	0.48	0.52
2010	10355902	5000683	5355219	0.48	0.52
2011	10622222	5134936	5487286	0.48	0.52
2012	10886790	5268224	5618566	0.48	0.52
2013	11148087	5399922	5748166	0.48	0.52
2014	11404881	5529415	5875466	0.48	0.52
2015	11655990	5656058	5999932	0.49	0.51
2016	11912094	5785266	6126828	0.49	0.51
2017	12172222	5916517	6255705	0.49	0.51
2018	12436438	6049867	6386571	0.49	0.51
2019	12703981	6184924	6519057	0.49	0.51
2020	12974095	6321300	6652795	0.49	0.51
2021	13245866	6458528	6787339	0.49	0.51
2022	13518555	6596228	6922327	0.49	0.51

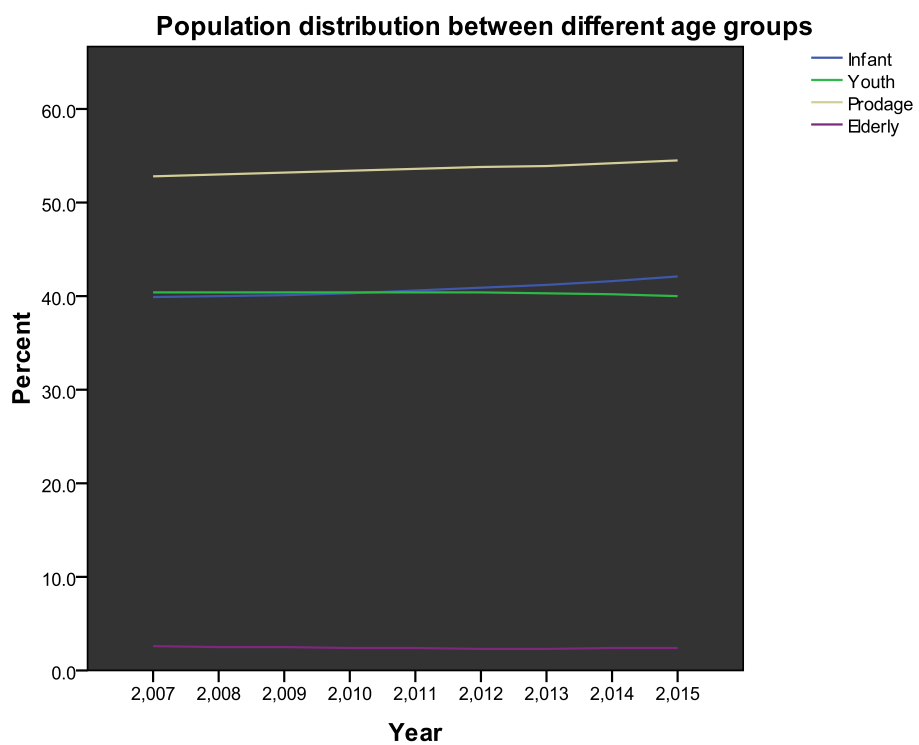
Source: LMIS

Year	Infant percent	Youth percent	Productive age percent	Elderly percent
2007	39.90	40.4	52.8	2.6
2008	40.00	40.4	53	2.5
2009	40.10	40.4	53.2	2.5
2010	40.30	40.4	53.4	2.4
2011	40.60	40.4	53.6	2.4
2012	40.90	40.4	53.8	2.3
2013	41.20	40.3	53.9	2.3
2014	41.60	40.2	54.2	2.4
2015	42.10	40.0	54.5	2.4

Source: LMIS

Year	Infant Population	Youth Population	Productive age Population	Elderly Population
2007	3,816,255	3,858,764	5,048,997	247,531
2008	3,927,693	3,967,874	5,209,445	247,823
2009	4,048,618	4,076,266	5,370,565	247,870
2010	4,178,405	4,183,222	5,531,987	248,436
2011	4,316,150	4,287,220	5,693,091	250,508
2012	4,451,699	4,395,405	5,853,409	254,765
2013	4,595,743	4,494,226	6,012,996	261,390
2014	4,747,441	4,583,691	6,181,524	270,188
2015	4,905,936	4,664,298	6,347,571	280,900

Source: LMIS



Infant (1 to 13 years), Youth (14-34 years), Productive age (16 to 64 years) and Elderly (above 64 years)

Population growth Rate status

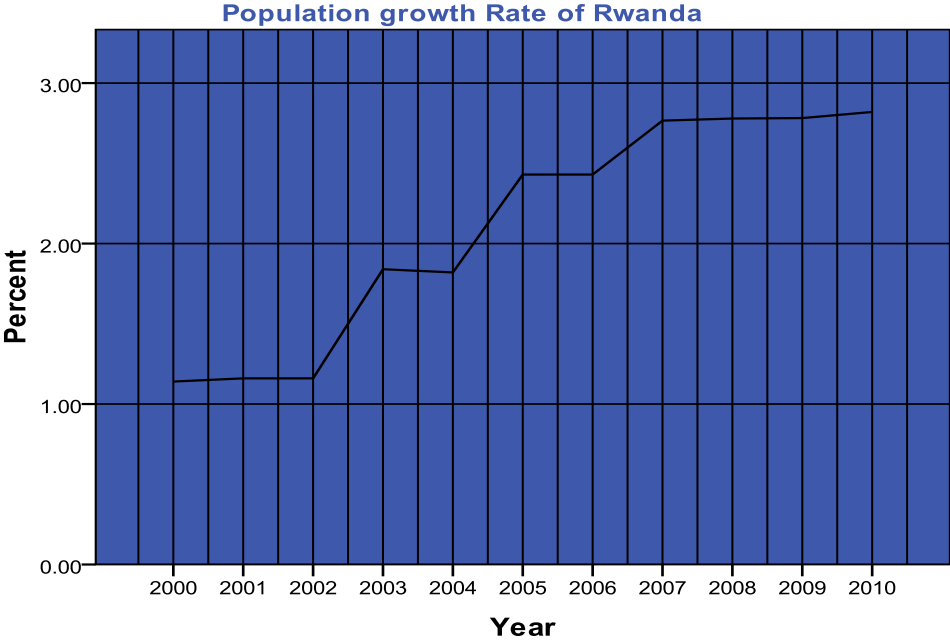
Population growth rate

Definition: The average annual percent change in the population, resulting from a surplus (or deficit) of births over deaths and the balance of migrants entering and leaving a country. Rwanda has a population growth rate of 2.82 (2010), it has increased from 1.14 in 2000 to 2.82 in 2010

Population Growth Rate

Year	Population growth rate
2000	1.14
2001	1.16
2002	1.16
2003	1.84
2004	1.82
2005	2.43
2006	2.43
2007	2.766
2008	2.779
2009	2.782
2010	2.82

Source: LMIS

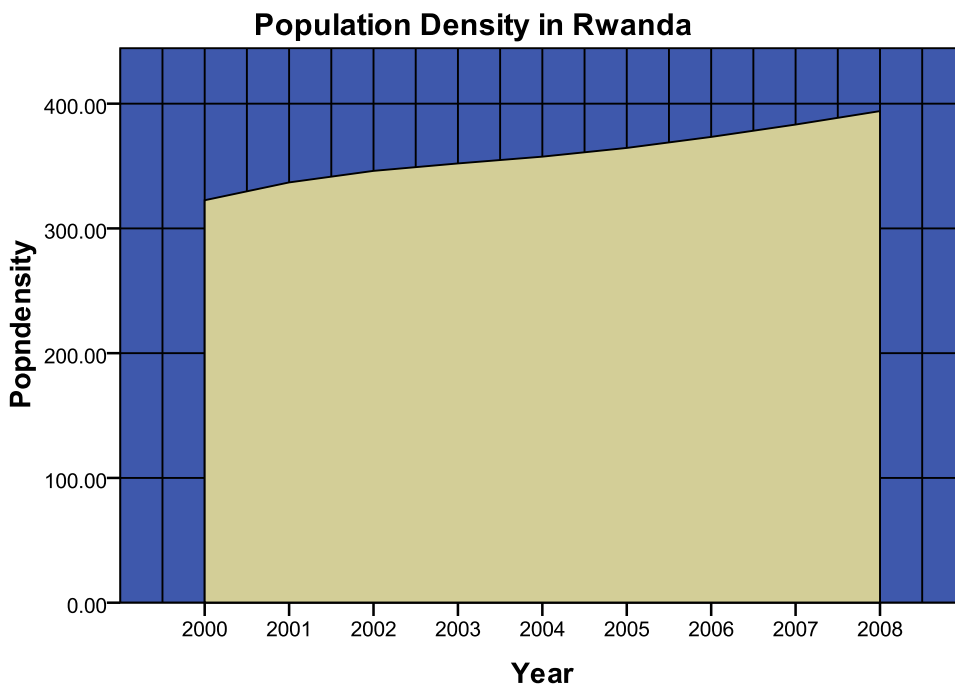


Population Density

The Population density (people per sq. km) in Rwanda was reported at 394.03 in 2008, according to the World Bank. Population density is midyear population divided by land area in square kilometers. Population is based on the de facto definition of population, which counts all residents regardless of legal status or citizenship except for refugees not permanently settled in the country of asylum, which are generally considered part of the population of their country of origin.

Land area is a country's total area, excluding area under inland water bodies, national claims to continental shelf, and exclusive economic zones. In most cases the definition of inland water bodies includes major rivers and lakes.

Year	Population Density
2000	322.57
2001	336.85
2002	346.12
2003	352.07
2004	357.51
2005	364.5
2006	373.33
2007	383.24
2008	394.03

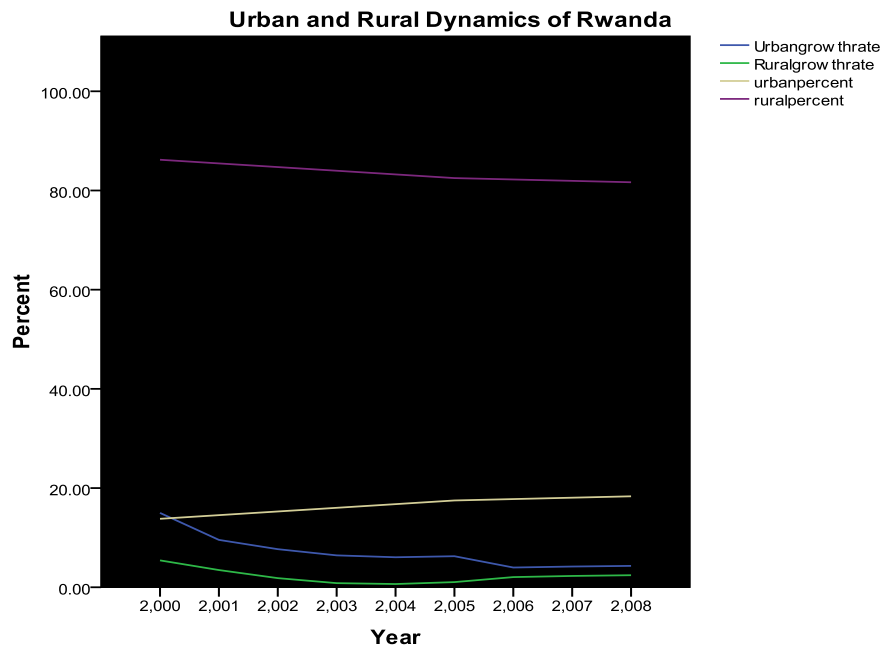


Rural vs. Urban Population

The population of Rwanda is largely rural with over 80% of the population residing in rural areas over the last 10 years. On the other hand, the urban population is approximately 20% with a growth rate that has been falling over the years and it's currently 4.31% from 14.99% in 2000, whereas the rural population growth rate has been increasing over the years with an approximate growth rate of 2.5%

Year	Urban Population growth rate	Rural Population growth rate	Urban as a % of total Population	Rural as a % of total Population	Urban Absolute Population	Rural Absolute Population
2000	14.99	5.42	13.8	86.2	1,098,176	6,859,621
2001	9.55	3.47	14.54	85.46	1,208,281	7,101,770
2002	7.68	1.84	15.28	84.72	1,304,713	7,233,984
2003	6.43	0.83	16.02	83.98	1,391,410	7,294,047
2004	6.05	0.65	16.76	83.24	1,478,180	7,341,508
2005	6.26	1.04	17.5	82.5	1,573,625	7,418,516
2006	3.98	2.05	17.78	82.22	1,637,537	7,572,460
2007	4.18	2.28	18.06	81.94	1,707,489	7,747,045
2008	4.31	2.43	18.34	81.66	1,782,775	7,937,919

Source: LMIS

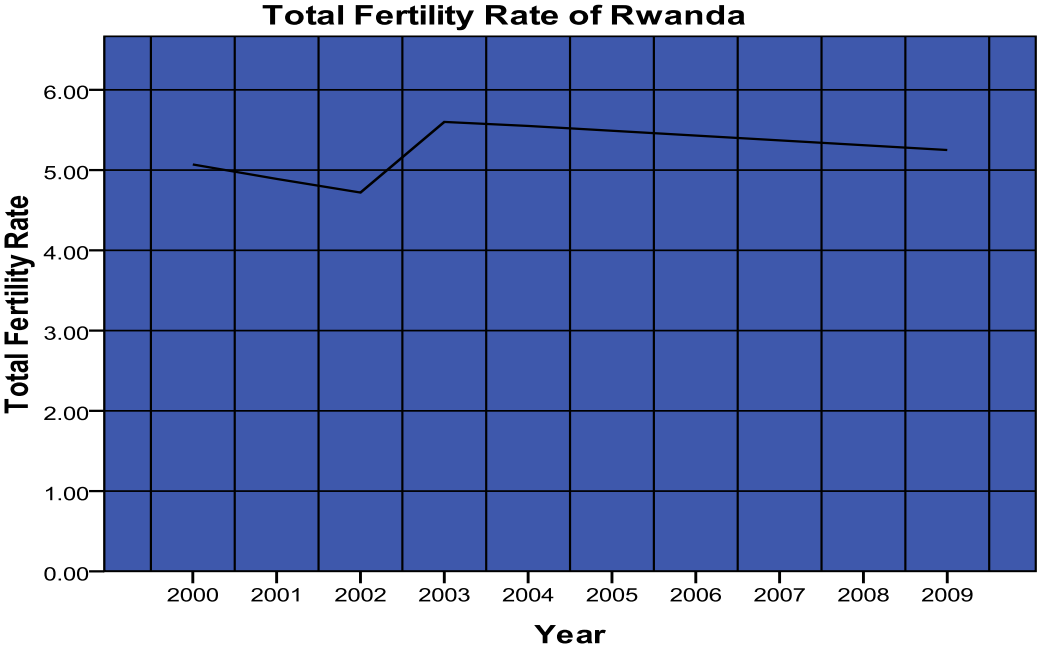


Definition of Total fertility rate: This is the average number of children that would be born per woman if all women lived to the end of their childbearing years and bore children according to a given fertility rate at each age.

Year	Total Fertility Rate (Children born per Woman)
2000	5.07
2001	4.89
2002	4.72
2003	5.6
2004	5.55
2005	5.49
2006	5.43
2007	5.37
2008	5.31
2009	5.25

Source: LMIS

The current total fertility rate is approximately 5.25 which means that every Rwanda woman is likely to give birth to approximately 5.25 children during her childbearing years ceteris paribus

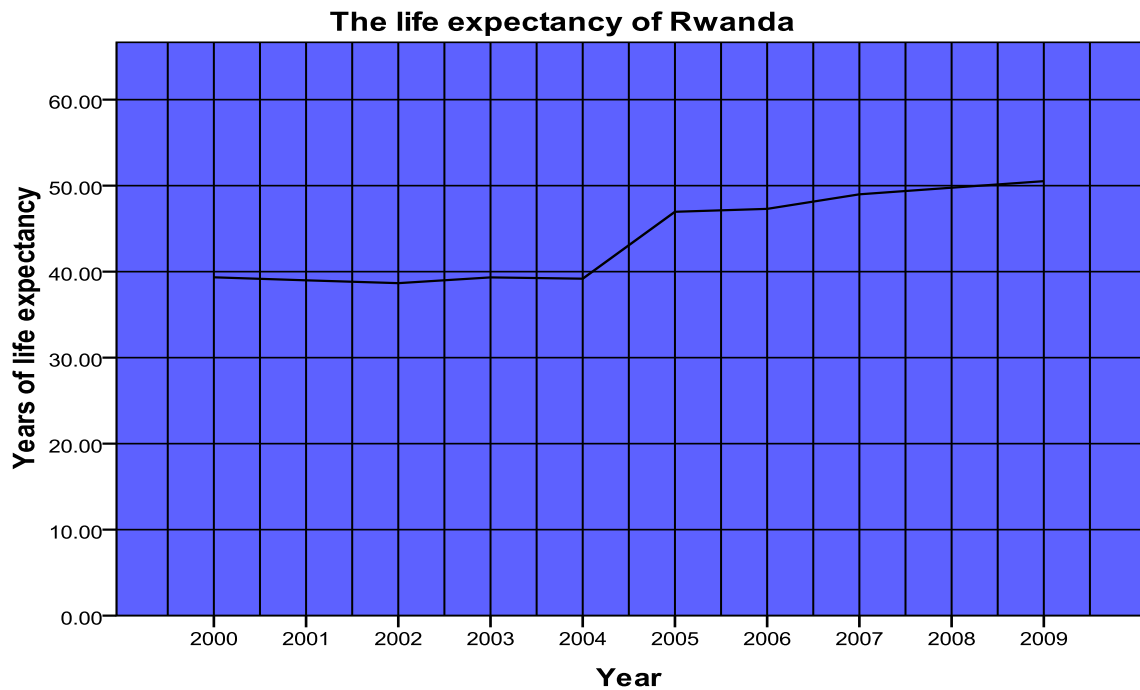


Life expectancy

The average number of years to be lived by Rwandese born in the same year, if mortality at each age remains constant in the future is approximately 50.52 years. It has been increasing from 39.34 years in 2000 to 50.52 years in 2009

Year	Expectancy Years
2000	39.34
2001	38.99
2002	38.66
2003	39.33
2004	39.18
2005	46.96
2006	47.3
2007	48.99
2008	49.76
2009	50.52

Source: LMIS



Dependency Ratio

This is the number of dependents (aged 0-14 and over 65) to the total population aged 15-64 years. The dependency ratio is currently estimated to be 0.81 and is linearly projected to increase to 0.83 by 2022 by the National Institute of statistics Rwanda.

The ratio means that there are 8.1 dependents for every 10 working people.

Dependency Ratio

Year	Dependency ratio Low	Average Dependency ratio	Dependency ratio High
2007	0.81	0.81	0.81
2008	0.81	0.81	0.81
2009	0.80	0.81	0.81
2010	0.80	0.81	0.81
2011	0.79	0.81	0.81
2012	0.79	0.81	0.82
2013	0.78	0.82	0.82
2014	0.78	0.82	0.83
2015	0.77	0.82	0.84
2016	0.76	0.83	0.85
2017	0.76	0.84	0.86
2018	0.75	0.84	0.87
2019	0.74	0.84	0.87
2020	0.73	0.84	0.87
2021	0.71	0.84	0.87
2022	0.70	0.83	0.87

Source: LMIS

The inverse of the dependency ratio, the inverse dependency ratio can be interpreted as how many independent workers have to provide for one dependent person

The increase in the ratio portrays an increase in the burden on the productive part of the population in terms of maintaining the upbringing and the pensions of the economically dependent

Net Migration Rate

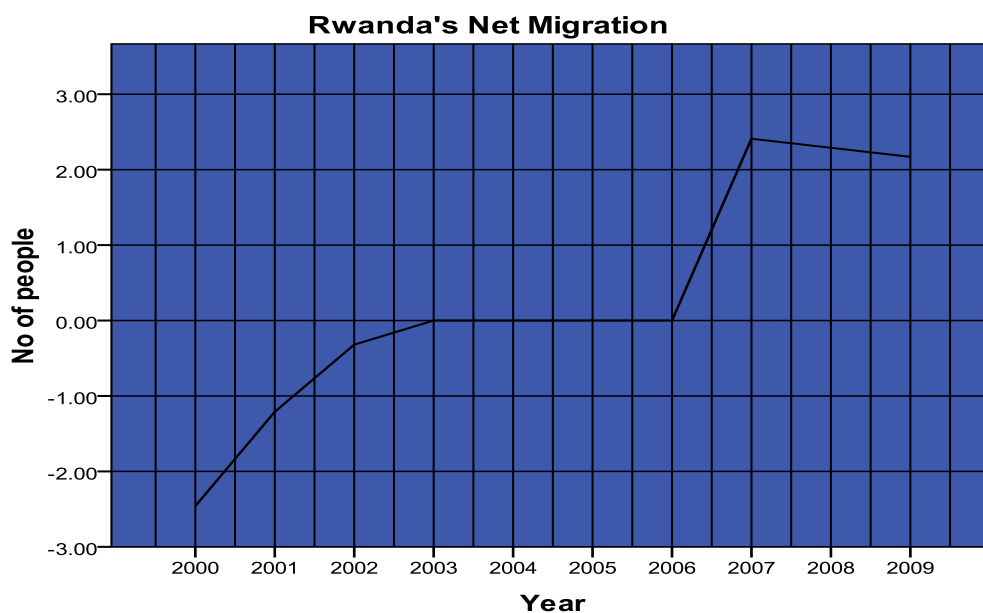
Definition of Net migration rate: This entry includes the figure for the difference between the number of persons entering and leaving a country during the year per 1,000 persons (based on midyear population).

There is currently an excess of people entering Rwanda with a magnitude of 2.17 per 1000 persons. This has increased from -2.46 person per 1000 in 2000 (this meant that more people were coming into the country than were leaving)

NB:-There are more internal migrants than external migrants

Year	Net Migration Rate (Migrants per 1000 Population)
2000	-2.46
2001	-1.21
2002	-0.32
2003	0
2004	0
2005	0
2006	0
2007	2.41
2008	2.29
2009	2.17

Source: LMIS



HIV Status

Definition of HIV/AIDS - people living with HIV/AIDS: This entry gives an estimate of all people (adults and children) alive at yearend with HIV infection, whether or not they have developed symptoms of AIDS.

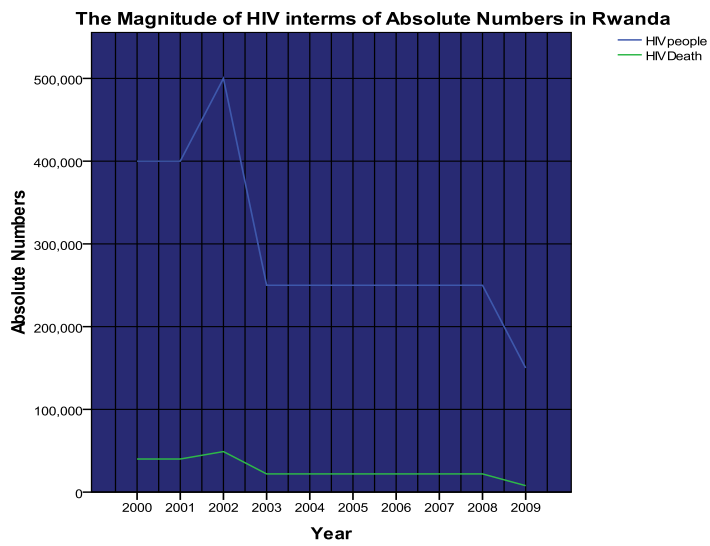
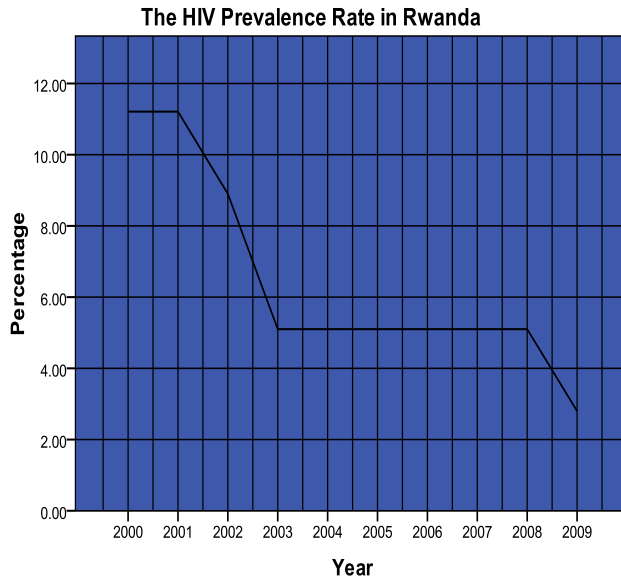
Definition of HIV/AIDS - adult prevalence rate: This entry gives an estimate of the percentage of adults (aged 15-49) living with HIV/AIDS. The adult prevalence rate is calculated by dividing the estimated number of adults living with HIV/AIDS at yearend by the total adult population at year end.

Definition of HIV/AIDS - deaths: This entry gives an estimate of the number of adults and children who died of AIDS during a given calendar year.

Year	People living with HIV/AIDS	(15-49 year)HIV Adult prevalence rate%	HIV/AIDS Deaths
2000	400000	11.21	40000
2001	400000	11.21	40000
2002	500000	8.9	49000
2003	250000	5.1	22000
2004	250000	5.1	22000
2005	250000	5.1	22000
2006	250000	5.1	22000
2007	250000	5.1	22000
2008	250000	5.1	22000
2009	150000	2.8	7800

Source: LMIS

Current HIV Status: The HIV prevalence rate is approximately 2.8%, it has fallen from 11.21% in 2000 to 2.8% by 2009. In terms of absolute numbers, it has fallen from 400000 to 150000 a trend that is equally depicted in the HIV deaths i.e. from 40000 in 2000 to 7800 in 2009.



Results of the above population

Labour Force: The labour force of Rwanda is approximately 86% and it has been in the same region over the years with women having a higher labour force than the male for the last 10 years. For more details see table below

Year	Sex (a)	Sex (d)	Age group (d)	Population ('000)	Labour force ('000)	Labour force participation rate (%)	Male Labour force participation rate (%)	Female Labour force participation rate (%)
1980	MF	Male and female	15-64	2 666.7	2 329.4	87.3	87.5	87.2
1981	MF	Male and female	15-64	2 748.7	2 400.7	87.3	87.5	87.2
1982	MF	Male and female	15-64	2 818.0	2 464.8	87.5	87.7	87.2
1983	MF	Male and female	15-64	2 883.1	2 524.6	87.6	87.9	87.2
1984	MF	Male and female	15-64	2 956.2	2 597.2	87.9	88.4	87.4
1985	MF	Male and female	15-64	3 044.3	2 678.5	88.0	88.7	87.4
1986	MF	Male and female	15-64	3 159.5	2 783.3	88.1	88.9	87.4
1987	MF	Male and female	15-64	3 295.1	2 908.9	88.3	89.2	87.4
1988	MF	Male and female	15-64	3 416.5	3 019.0	88.4	89.4	87.5
1989	MF	Male and female	15-64	3 476.3	3 075.9	88.5	89.6	87.5
1990	MF	Male and female	15-64	3 445.7	3 052.2	88.6	89.7	87.5
1991	MF	Male and female	15-64	3 302.9	2 927.2	88.6	89.8	87.5
1992	MF	Male and female	15-64	3 070.9	2 717.3	88.5	89.7	87.3
1993	MF	Male and female	15-64	2 819.3	2 496.0	88.5	89.9	87.3
1994	MF	Male and female	15-64	2 644.6	2 366.3	89.5	90.9	88.2
1995	MF	Male and female	15-64	2 613.6	2 323.7	88.9	90.1	87.8
1996	MF	Male and female	15-64	2 754.0	2 439.2	88.6	89.5	87.7
1997	MF	Male and female	15-64	3 038.5	2 680.1	88.2	88.9	87.6
1998	MF	Male and female	15-64	3 410.4	2 998.5	87.9	88.3	87.6
1999	MF	Male and female	15-64	3 785.4	3 318.5	87.7	87.8	87.5
2000	MF	Male and female	15-64	4 102.1	3 585.0	87.4	87.3	87.5
2001	MF	Male and female	15-64	4 343.2	3 782.8	87.1	86.8	87.4
2002	MF	Male and female	15-64	4 526.9	3 926.7	86.7	86.2	87.2
2003	MF	Male and female	15-64	4 669.0	4 042.4	86.6	85.9	87.2
2004	MF	Male and female	15-64	4 797.6	4 146.7	86.4	85.6	87.2
2005	MF	Male and female	15-64	4 933.7	4 262.4	86.4	85.4	87.3
2006	MF	Male and female	15-64	5 079.0	4 393.7	86.5	85.5	87.5
2007	MF	Male and female	15-64	5 225.4	4 531.9	86.7	85.7	87.7
2008	MF	Male and female	15-64	5 373.4	4 672.4	87.0	85.9	87.9

Source: LMIS

Impact of growth rate of the population, on growth rate of GDP per capita

Growth Rate of GDP per capita = Growth Rate of GDP – Growth Rate of Population

Year	Population levels (Millions)	Population growth rate %	GDP growth rate%	Growth Rate of GDP per capita%
1980	5.16	3.29	8.95	5.7
1981	5.35	3.13	5.44	2.3
1982	5.55	2.95	1.81	-1.1
1983	5.76	3	5.98	3.0
1984	5.9	3.34	-4.24	-7.6
1985	6.1	3.78	4.4	0.6
1986	6.3	4.52	5.47	1.0
1987	6.53	4.96	-0.02	-5.0
1988	6.76	4.29	4.5	0.2
1989	6.99	2.32	-0.04	-2.4
1990	7.155	0.39	-2.4	-2.8
1991	7.375	3.77	-2.51	-6.3
1992	7.38	6.85	5.87	-1.0
1993	7.609	8.27	-8.11	-16.4
1994	5.08	6.53	-50.25	-56.8
1995	4.98	1.92	35.22	33.3
1996	6.167	3.96	12.75	8.8
1997	6.358	8.31	13.85	5.5
1998	6.64	10.04	8.86	-1.2
1999	7.08	9.03	7.58	-1.5
2000	8.025	6.69	8.1	1.4
2001	8.383	4.33	8.5	4.2
2002	8.614	2.71	11	8.3
2003	8.758	1.7	0.3	-1.4
2004	8.882	1.53	5.3	3.8
2005	9.038	1.94	7.1	5.2
2006	9.2	2.39	7.29	4.9
2007	9.394	2.62	7.94	5.3
2008	9.591	2.779	11.23	8.5
2009	9.792	2.782		
2010	9.998	2.82		
2011	10.208			
2012	10.422			
2013	10.641			
2014	10.865			
2015	11.092			

Population Distribution between Respective Age groups

Year	MEDIUM			LOW			HIGH		
		MALE	FEMALE	TOTAL	MALE	FEMALE	TOTAL	MALE	FEMALE
2007									
Infant	3816255	1903095	1913161	3816255	1903095	1913161	3816255	1903095	1913161
Youth Population	3858764	1848824	2009935	3858764	1848824	2009935	3858764	1848824	2009935
Productive Population	5048997	2375041	2673955	5048997	2375041	2673955	5048997	2375041	2673955
Elderly Population	247531	100895	146639	247531	100895	146639	247531	100895	146639
2008									
Infant	3927693	1961322	1966371	3918378	1956605	1961774	3930316	1962651	1967665
Youth Population	3967874	1905070	2062804	3967874	1905070	2062804	3967874	1905070	2062804
Productive Population	5209445	2454829	2754617	5209445	2454829	2754617	5209445	2454829	2754617
Elderly Population	247823	100004	147822	247823	100004	147822	247823	100004	147822
2009									
Infant	4048618	2024140	2024479	4020481	2009907	2010574	4056516	2028134	2028382
Youth Population	4076266	1961572	2114694	4076266	1961572	2114694	4076266	1961572	2114694
Productive Population	5370565	2535054	2835514	5370565	2535054	2835514	5370565	2535054	2835514
Elderly Population	247870	99056	148814	247870	99056	148814	247870	99056	148814
2010									
Infant	4178405	2091290	2087114	4121486	2062523	2058963	4194340	2099343	2094996
Youth Population	4183222	2017835	2165386	4183222	2017835	2165386	4183222	2017835	2165386
Productive Population	5531987	2615483	2916505	5531987	2615483	2916505	5531987	2615483	2916505
Elderly Population	248436	98460	149978	248436	98460	149978	248436	98460	149978
2011									
Infant	4316150	2162366	2153784	4219993	2113796	2106196	4343006	2175931	2167077
Youth Population	4287220	2072918	2214299	4287220	2072918	2214299	4287220	2072918	2214299
Productive Population	5693091	2695734	2997352	5693091	2695734	2997352	5693091	2695734	2997352
Elderly Population	250508	98730	151775	250508	98730	151775	250508	98730	151775
2012									
Infant	4451699	2232240	2219458	4305348	2158352	2146994	4492502	2252839	2239660
Youth Population	4395405	2130263	2265141	4395405	2130263	2265141	4395405	2130263	2265141
Productive Population	5853409	2775526	3077879	5853409	2775526	3077879	5853409	2775526	3077879
Elderly Population	254765	100217	154548	254765	100217	154548	254765	100217	154548
2013									
Infant	4595743	2306476	2289265	4387889	2201574	2186313	4653834	2335793	2318039
Youth Population	4494226	2182841	2311384	4494226	2182841	2311384	4494226	2182841	2311384
Productive Population	6012996	2854873	3158124	6012996	2854873	3158124	6012996	2854873	3158124
Elderly Population	261390	103009	158377	261390	103009	158377	261390	103009	158377
2014									
Infant	4747441	2384663	2362780	4466310	2242816	2223493	4826291	2424448	2401844
Youth Population	4583691	2230648	2353046	4583691	2230648	2353046	4583691	2230648	2353046
Productive Population	6181524	2938683	3242840	6181524	2938683	3242840	6181524	2938683	3242840
Elderly Population	270188	106982	163202	270188	106982	163202	270188	106982	163202
Elderly									
2015									
Infant	4905936	2466337	2439598	4539290	2281382	2257907	5009141	2518400	2490740
Youth Population	4664298	2273906	2390389	4664298	2273906	2390389	4664298	2273906	2390389
Productive Population	6347571	3021187	3326387	6347571	3021187	3326387	6347571	3021187	3326387
Elderly Population	280900	111948	168954	280900	111948	168954	280900	111948	168954